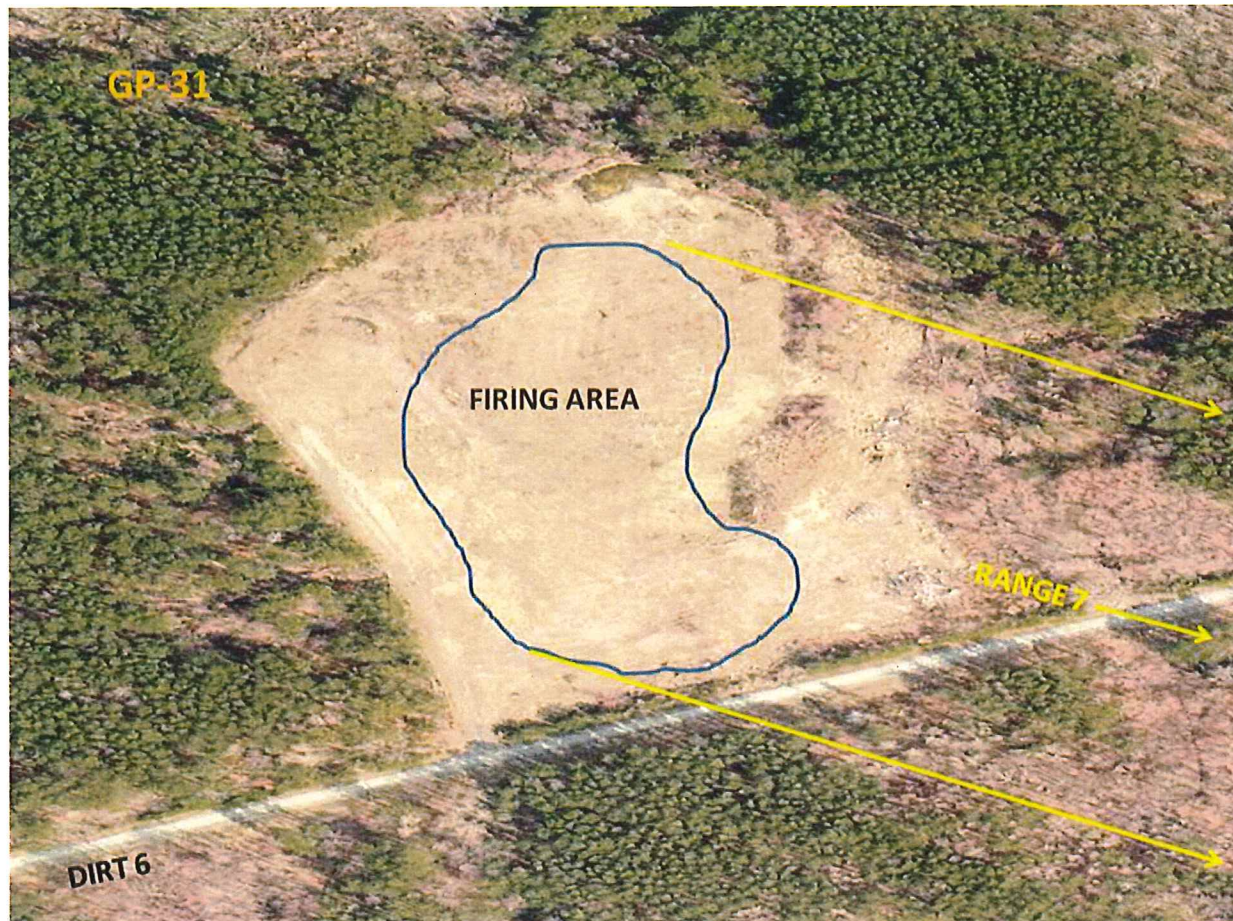


GUN POSITION 31 SOP

RANGE DESCRIPTION

Gun Position 31 is an active, 120mm mortar position located at Grid 76706920. It is accessible from MCB Dirt-6.

GUN POSITION 31



INFORMATION

Description: 120mm Mortar Firing Position
Status: Active
Location: 76706920
Number of Firing Points: 4

RANGE USES

Primary Use: Indirect mortar fire into Range 7 impact area.

WEAPONS ACCOMMODATED

-120mm mortars

AMMUNITION AUTHORIZED

-120mm mortar certified for overhead fire

PRIMARY DIRECTION OF FIRE. Southeast

RANGE USE RESTRICTIONS/COMMENTS

1. Only 120mm mortar ammunition approved for overhead fire will be used.
2. OIC/RSO must have paperwork stating the ammunition is approved for overhead fire.
3. GP 31 can only fire into the Range 7 impact area.
4. All impacts must be observed from Range 7.
5. The only targets to be fired at from GP-31 are the ones inside the target box listed on the SDZ in this SOP.
6. MCB Dirt 6 must be closed when firing 120mm mortars from GP-31.

FACILITIES (Number of Each)

Towers: 0
Sheds: 0
Ammo Breakdown: 0
Parking: Limited

UTILITIES AVAILABLE

Electricity: None
Lights: None
Water System: None

INSTALLED COMMUNICATIONS. None

<u>MEASURED DISTANCES</u>	<u>MILES</u>	<u>MGRS</u>
MT (POL) TBS Distance	8.5	87106390
Rations Distance	8.7	87406374
To ASP Distance	13.1	91256605
EMT/Fire (Fire House 3)	10.2	89606410
Nearest MEDEVAC LZ	0.0	76706920 (GP-31)

Directions to LZ: For a life flight MEDEVAC, GP-31 will be the primary LZ. Back up LZ will be LZ Blackbird at Range 8 (77586873). Exit GP-31, turn left, go one half mile, take first right to Range 8.

LASERS AUTHORIZED. None

AVAILABLE DAYS/HOURS. 350/0500-2259 (Airspace needs to be scheduled for any other times).

AREA SUITABILITY

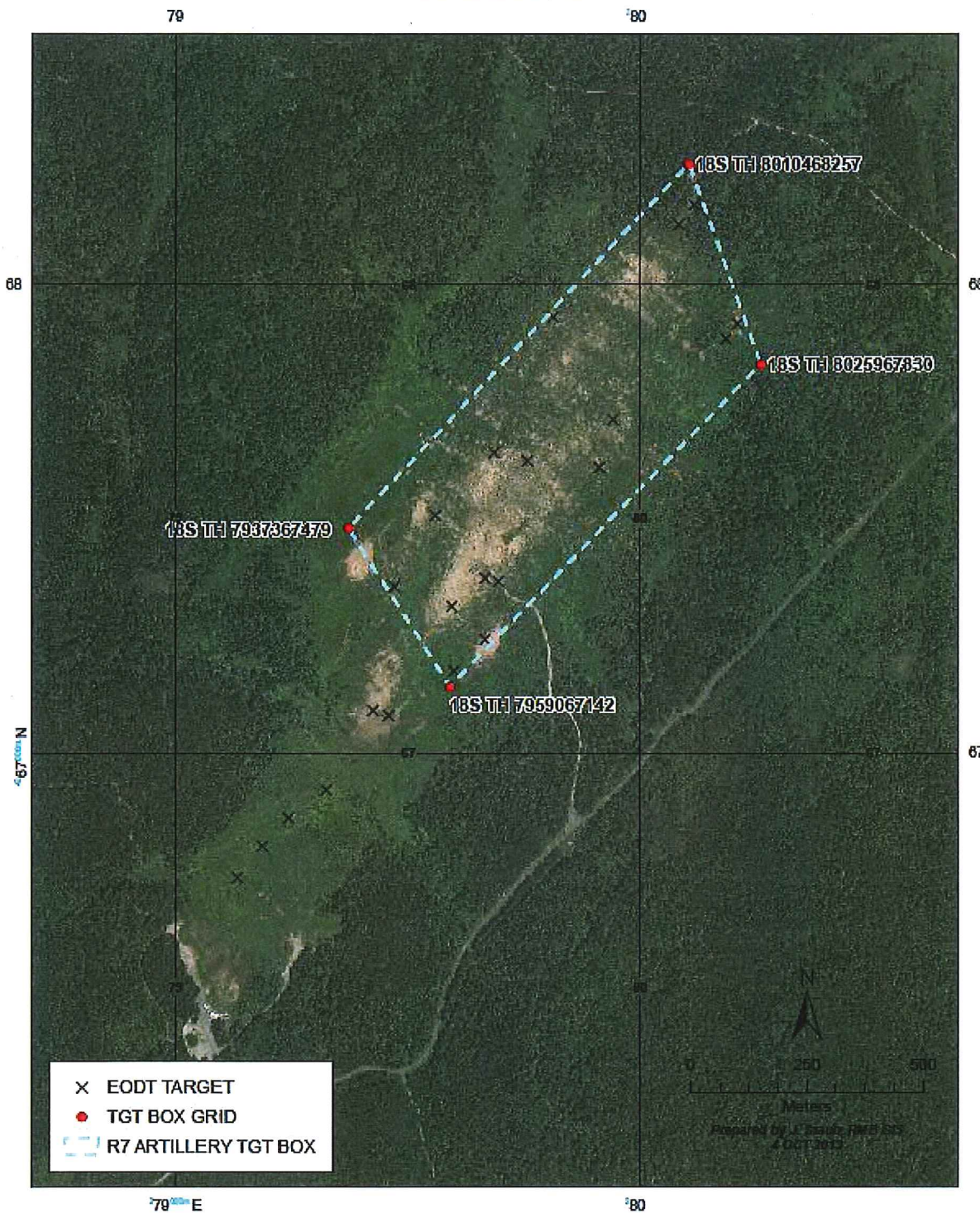
<u>Unit Type</u>	<u>Unit Size</u>	<u>Number of Units</u>
Weapons	Section	1

GEOGRAPHICAL DATA

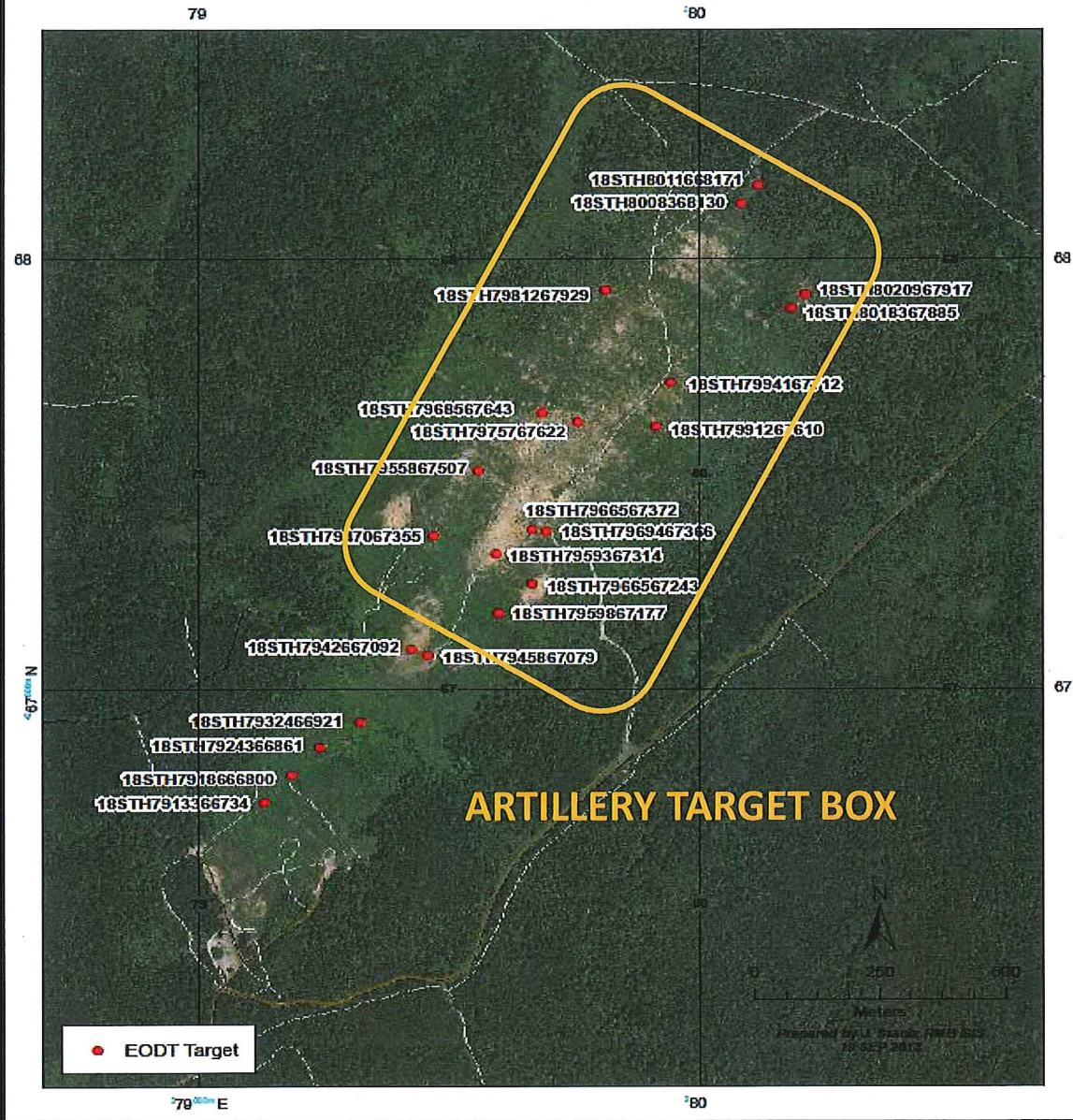
Access Routes: MCB-3
Soil Type: Dirt
Terrain Type: Small hills
Vegetation: Grass/Woodland

APPLICABLE MAP SHEET. All grid coordinates listed in this order apply to the Quantico Military Installation Map V834S Edition 2-NIMA 1:25000.

**RANGE 7 ARTILLERY TARGET BOX
MCB Quantico, VA**



RANGE 7 - EODT TARGETS
MCB Quantico, VA



COMMUNICATION REQUIREMENTS:

1. A radio check is required immediately upon occupying any portion of the RTA, every 30 minutes in a live fire status and every 3 hours in a non-live fire status.
2. The Range Control Facility (RCF) Fire Desk Net Control call sign is "Range Control". Your call sign is "Range XX" (name of range, training area or facility unit is occupying).
3. The primary RCF Fire Desk Net Control frequencies are: ELMR talk group "RC Safety" (ground) and 323.7 AM UHF (air).
4. The secondary RCF Fire Desk Net Control is telephone, numbers: 703-784-5321 or 5322.
5. OIC/RSO will monitor the RCF primary and secondary Safety Nets at all times. Instant communication is required.
6. Any unit with organic ELMR radios will have their ELMR radios programmed with the "RC Safety" talk group and use those radios as their primary means of communication within the RTA.
7. Units without organic ELMR assets will be issued ELMR radios from RMB upon check-in.
8. Approved Non-ELMR radios are only authorized for internal communication (ground).
9. If the RCF cannot reach a unit within the RTA via primary communication, the unit will be contacted via the secondary means of communication.
10. Upon loss of primary communication the OIC/RSO will initiate a "check fire"/cease training status and will contact the RCF via secondary communication. This communication will be maintained while primary communication is being restored. Units may only resume firing/training once primary communication has been re-established and clearance is granted by the RCF.

INJURY CLASSIFICATIONS:

Injuries are classified into the following categories in order to aid in casualty evacuation from the RTA.

1. ROUTINE. Routine injuries are those injuries that are not threatening to life, limb or eyesight; and conditions or illnesses treatable by medication or procedures available at the base medical facilities.
2. PRIORITY. Priority injuries are those injuries that require immediate medical attention but are not threatening to life, limb, or eyesight if treated promptly.
3. URGENT. Urgent injuries are severe injuries that are threatening to life, limb, or eyesight and require immediate medical attention.
4. MASS CASUALTY. A mass casualty is a series of injuries with multiple priority and urgent medical patients.

MEDICAL EVACUATION (MEDEVAC) PROCEDURES:

1. Injury occurs.
2. Range immediately cease-fires.
3. Medical support evaluates/treats injured personnel.
4. Range radio operator/OIC notifies the ROCC of the injury, stating briefly what happened, the extent of the injury and what type of MEDEVAC transportation needed (ground/air).
5. Maintain constant radio contact with Range Control and await further instructions.

*Minor injuries and illnesses requiring routine field medical services need not be reported to RMB but should be reported in unit training logs.



Range Control Officer

Date: 14 JUNE 2016